

The Indices of Deprivation 2007

Headline Summary for Staffordshire County (January 2008)

Produced by the
Research Business Unit
Development Services Directorate
Staffordshire County Council
Riverway
Staffordshire County Council ST16 3TJ

For further information contact:
Jon Adamson
Telephone: 01785 276568
Email: jonathan.adamson@staffordshire.gov.uk



Staffordshire County Council, while believing the information in this publication to be correct, does not guarantee its accuracy nor does the County Council accept any liability for any direct or indirect loss or damage or other consequences, however arising from the use of such information supplied.

This publication is the copyright of Staffordshire County Council. It is expressly forbidden to copy this publication or any part of the data contained in it, without the Council's written permission. It is also forbidden to incorporate the data, or any part of it, in an electronic storage system (other than for the user's own internal purposes) without the Council's permission. Applications for such permission must be made to the County Council in writing.

Purpose of this report

This short document is to inform relevant partners in Staffordshire that analysis of the updated Indices of Deprivation 2007 (ID 2007) is currently underway by Staffordshire Observatory and to provide the initial, headline information. Additional, more detailed reports will be produced by Staffordshire Observatory in February 2008 and made available on the website (<http://www.staffordshirepartnership.org.uk/observatory/>).

For more information please contact:

Rosanne Cororan (Research & Information Officer)
Research Unit, Staffordshire County Council
t: 01785 27 6518
e: rosanne.cororan@staffordshire.gov.uk

Background

Communities and Local Government (CLG) commissioned the Social Disadvantage Research Centre (SDRC) at the University of Oxford to review and update the Indices of Deprivation 2004 (ID 2004) for England. The specific remit given to SDRC was to ensure, as far as possible, that the new Index is similar to the ID 2004. This is to provide some consistency and scope for comparability between the two Indices, and thus, fulfil a commitment made during the last update of the Index.

Following extensive public consultation, an independent academic peer review and a significant programme of work, on 6th December 2007 the Department for Communities & Local Government released the Index of Multiple Deprivation 2007 (IMD 2007).

Analysis of the Indices of Deprivation 2007 for Staffordshire

Staffordshire Observatory is currently undertaking analysis of the updated indices. Analysis of all of the domains of ID 2007 is being undertaken at District, County and Regional level. This work will culminate in the production of a report for Staffordshire County, including its position in the regional context of deprivation in the West Midlands, and summary reports for the eight district areas. These reports will include thematic 'hot-spot' maps highlighting those LSOAs with the highest levels of deprivation and graphics/analysis looking at change since the ID 2004.

Further work is being undertaken investigating how this information can best be made available to support the development of neighbourhood management. For example, how to make the data and analysis available in an interactive way which enable users to look at the information for their own purposes/boundaries.

Introduction

The ID 2007 provides a relative ranking of areas across England according to their level of deprivation and is based on the small area geography known as Lower Super Output Areas (LSOAs). There are 32,482 LSOAs in England. The LSOA ranked 1 by the ID 2007 is the most deprived and that ranked 32,482 is the least deprived. LSOAs have between 1,000 and 3,000 people living in them with an average population of 1,500 people. In most cases, these are smaller than wards, thus allowing the identification of small pockets of deprivation. However, it is important to be mindful that not all deprived people live in deprived areas and conversely, not everyone living in a deprived area is deprived.

Methodology

The new ID 2007 is a measure of multiple deprivation at the Lower Super Output Area (LSOA) level. The ID 2007 brings together 37 different indicators (see Appendix I, page 8) and is made up of seven LSOA level domain indices:

- Income Deprivation
- Employment Deprivation
- Health Deprivation and Disability Deprivation
- Education, Skills and Training Deprivation
- Barriers to Housing and Services
- Crime
- The living Environment Deprivation

There are also two supplementary indices (Income Deprivation Affecting Children and Income Deprivation Affecting Older People).

By combining a number of indicators covering a range of economic, social and housing issues, into a single deprivation score for each small area in England, this allows each area to be ranked relative to one another according to their level of deprivation. The Domain weights for the IMD 2007 are shown in table 1, below.

Table 1: Domain Weights for the IMD 2007

	<u>Domain Weight</u>
Income Deprivation Domain	22.5%
Employment Deprivation Domain	22.5%
Health Deprivation and Disability Domain	13.5%
Education, Skills and Training Deprivation Domain	13.5%
Barriers to Housing and Services Domain	9.3%
Crime Domain	9.3%
Living Environment Deprivation Domain	9.3%

The IMD index can be used to compare the extent of and concentrations of deprivation within and across local authorities. It can be used to identify either the proportion of LSOAs within a local authority which fall within the 10% or 20% most deprived nationally or the proportion of England's most deprived LSOAs that fall within each district.

The methodology underpinning the ID 2004 and the ID 2007 are largely the same though there have been small changes to some of the underlying indicators. Comparison between the two indices is therefore acceptable. The overall domains and the geography used have not been changed, though some specific indicators have been where more up to date indicators have become available.

The majority of the data underpinning the IMD 2007 represents 2005 although some data covers a number of years, for example an average of 2003-2005.

The Index of Multiple Deprivation

The overall Index of Multiple Deprivation (IMD) combines information from the seven domains of deprivation: Income Deprivation, Employment Deprivation, Health Deprivation and Disability, Education Skills and Training Deprivation, Barriers to Housing and Services, Living Environment Deprivation and Crime; and describes the relative level of deprivation in an area (LSOA). The domains are conceived as independent dimensions of multiple deprivation, each with their own additive impact on multiple deprivation.

The map in Figure 1 (page 6) shows the LSOAs in Staffordshire and Stoke-on-Trent which fall into the most deprived 10% and 20% of LSOAs in England. For the purpose of this report we will just be looking at the headline figures for LSOAs in Staffordshire County.

In Staffordshire County 69,034 people (25,631 households) live within SOAs which fall into the 20% most deprived SOAs in England. This represents 8.6% of Staffordshire's population.

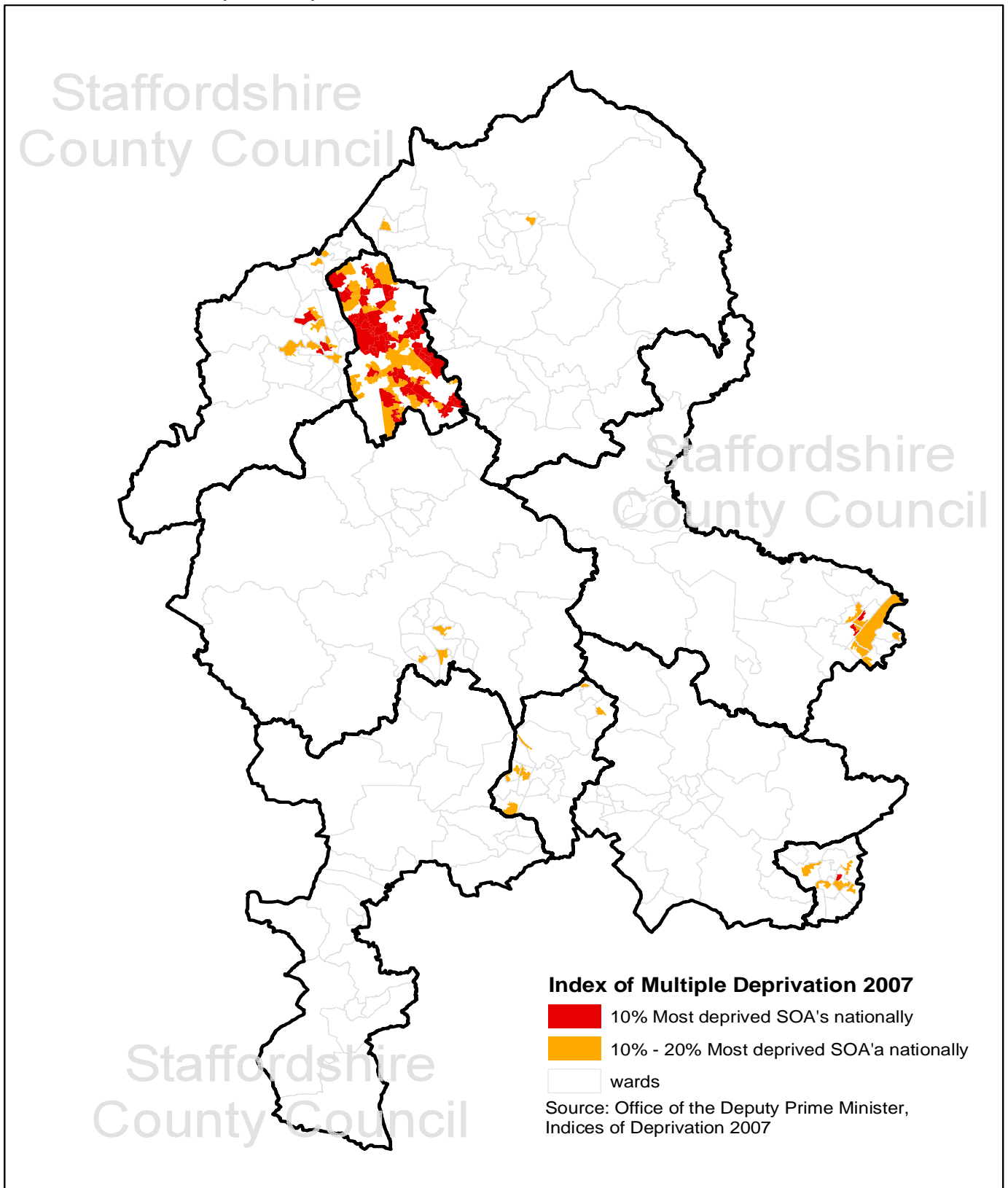
Staffordshire County contains just six of the 10% most deprived LSOAs in England. Staffordshire has 525 LSOAs in total so just over 1% of all its LSOAs are in the 10% most deprived. These LSOAs can be found in the Cross Heath, Knutton and Silverdale, and Chesteron wards in Newcastle-Under-Lyme, the Eton Park and Shobnall wards in East Staffordshire, and the Glascote ward in Tamworth. In total around 8,153 people (3580 households) live within these LSOAs which fall into the 10% most deprived nationally.

In Staffordshire a further 60,878 people live within LSOAs which fall into the 10%-20% most deprived LSOAs in England. This accounts for 24,981 households across 40 LSOAs. The greatest concentration of these LSOAs can be found in East Staffordshire (10 LSOAs; 14.3% of LSOAs in the district), followed by Newcastle-Under-Lyme (9 LSOAs; 11.1% of LSOAs in the district), Cannock Chase (8 LSOAs; 13.3% of LSOAs), Tamworth (8 LSOAs; 16% of LSOAs), Staffordshire Moorlands (3 LSOAs; 5.1% of LSOAs) and Stafford Borough (2 LSOAs; 2.5% of LSOAs). There are no LSOAs in Lichfield district that fall into the 20% most deprived LSOAs in England.

Figure 2 (page 7) summarises the distribution of LSOAs in each district for the ID 2004 and the ID 2007 by decile range.

Figure 1: Index of Multiple Deprivation in Staffordshire & Stoke-on-Trent

Index of Multiple Deprivation 2007 - The Most Deprived Super Output Areas in Staffordshire & Stoke-on-Trent



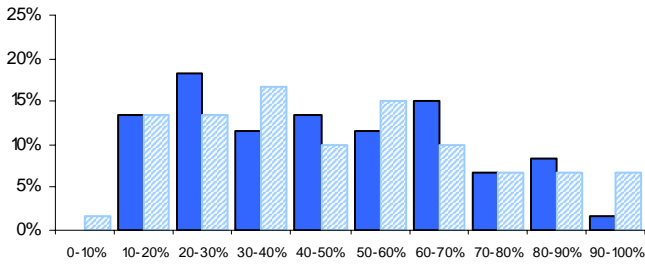
This map is reproduced from Ordnance Survey Material with the permission of Ordnance Survey on behalf of the controller of Her Majesty's Stationery Office (C) Crown Copyright. Unauthorised reproduction infringes Crown Copyright and may lead to prosecution or civil proceedings. Staffordshire County Council 100019422. 2007

Produced by the Research Unit, Development Services Department, Staffordshire County Council, 2007.

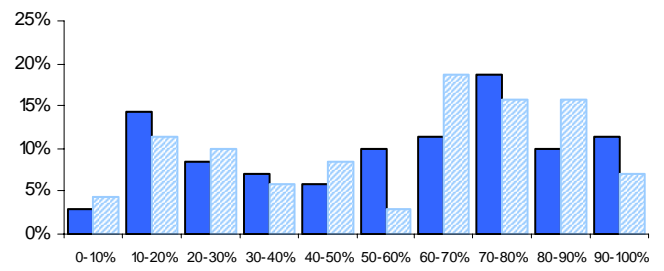


Figure 2: Index of Multiple Deprivation: % of LSOAs ranked in each percentage band (deciles)

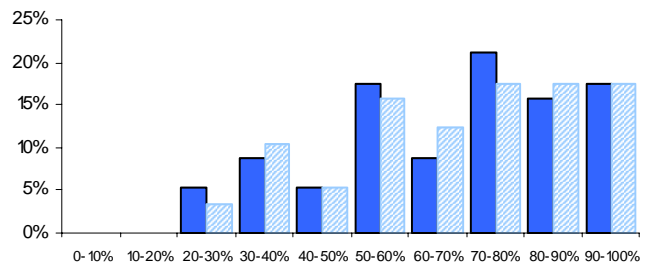
Cannock Chase



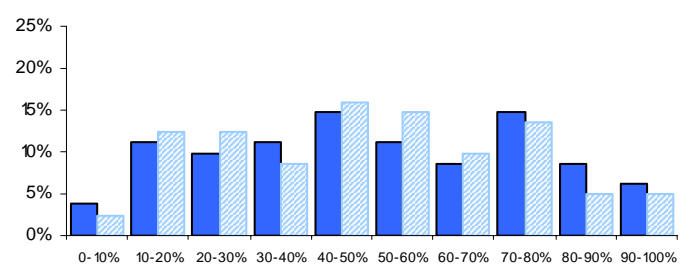
East Staffordshire



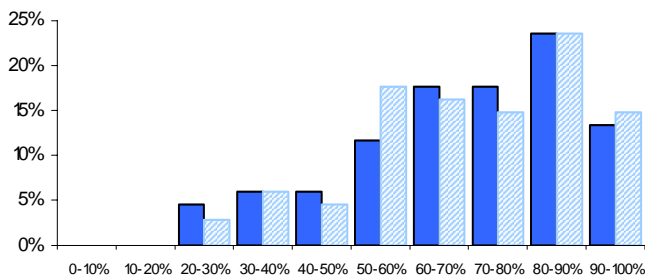
Lichfield



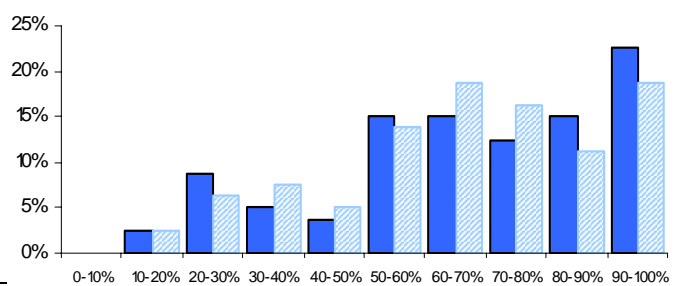
Newcastle-Under-Lyme



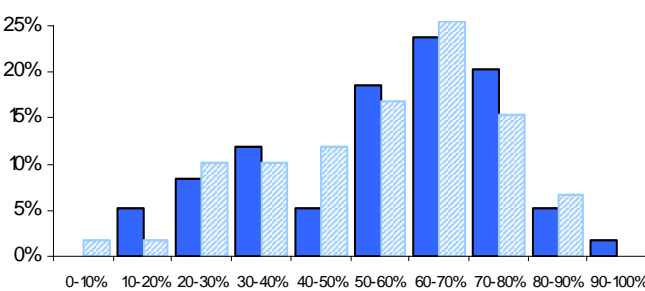
South Staffordshire



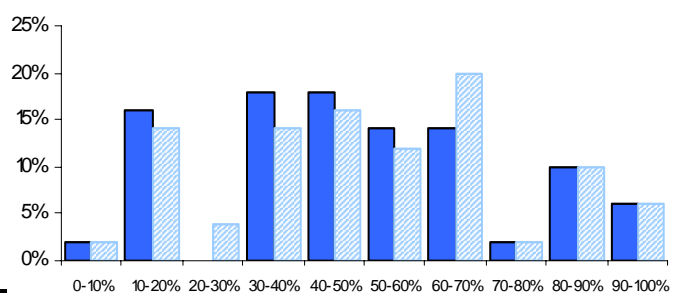
Stafford Borough



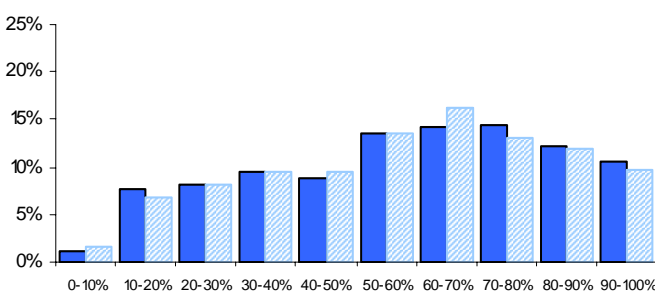
Staffordshire Moorlands



Tamworth



Staffordshire County



■ 2007 ■ 2004

Appendix I

Indices of Deprivation 2007 - Domains and Indicators

Income Deprivation

- Adults and children in Income Support Households (Source: Department for Work and Pensions (DWP) 2005)
- Adults and children in Income-Based Job Seekers Allowance Households (Source: DWP 2005)
- Adults and children in Pension Credit (Guarantee) Households (Source: DWP 2005)
- Adults and children in those Working Tax Credit households where there are children in receipt of Child Tax Credit whose equivalised income (excluding housing benefits) is below 60 per cent of the median before housing costs (Source: HMRC 2005)
- Adults and children in Child Tax Credit Households (who are not eligible for IS, Income-Based Job Seekers Allowance, Pension Credit or Working Tax Credit) whose equivalised income (excluding housing benefits) is below 60 per cent of the median before housing costs (Source: HMRC 2005)
- National Asylum Support Service (NASS) supported asylum seekers in England in receipt of subsistence support, accommodation support, or both (Source: NASS 2006)

Employment Deprivation

- Recipients of Jobseekers Allowance (both contribution-based and income based): men aged 18-64 and women aged 18-59 (Source: DWP 2005)
- Recipients of Incapacity Benefit: men aged 18-64 and women aged 18-59 (Source: DWP 2005)
- Recipients of Severe Disablement Allowance: men aged 18-64 and women aged 18-59 (Source: DWP 2005)
- Participants in the New Deal for the 18-24s who are not in receipt of JSA (Source: DWP 2005)
- Participants in the New Deal for 25+ who are not in receipt of JSA (Source: DWP 2005)
- Participants in the New Deal for Lone Parents (after initial interview) (Source: DWP 2005)

Health Deprivation and Disability

- Years of Potential Life Lost (YPLL) (2001 to 2005, Source: ONS)
- Comparative Illness and Disability Ratio (CIDR) (2005, Source: DWP)
- Measures of acute morbidity, derived from Hospital Episode Statistics (2004 to 2005, Source: Department of Health)
- The proportion of adults under 60 suffering from mood or anxiety disorders based on prescribing (2005, Source: Prescribing Pricing Authority), Hospital Episode Statistics (2004 to 2005, Source: Department of Health) and Incapacity Benefit data (2005, Source: DWP)

Education, Skills and Training

Sub Domain: Children/young people

- Average test score of pupils at Key Stage 2 (2 year weighted average, 2004-2005, Source: Department for Children, Schools and Families (DCSF))
- Average test score of pupils at Key Stage 3 (2 year weighted average, 2004-2005, Source: DCSF)
- Best of 8 average capped points score at Key Stage 4 (this includes results of GCSEs, GNVQs and other vocational equivalents) (2 year weighted average, 2004-2005, Source: DCSF)
- Proportion of young people not staying on in school or non-advanced education above the age of 16, Source: HMRC Child Benefit (CB) data
- Secondary school absence rate (2 year average 2004-2005, Source: DCSF)
Proportion of those aged under 21 not entering higher education (5 year average, 2001-2005, Source: Universities and Colleges Admission Service (UCAS), Higher Education Statistics Agency (HESA))

Sub Domain: Skills

- Proportions of working age adults (aged 25-54) in the area with no or low qualifications (Source: 2001 Census)

Barriers to Housing and Services

Sub Domain: Wider Barriers

- Household overcrowding (Source: 2001 Census)
- LA level percentage of households for whom a decision on their application for assistance under the homeless provisions of housing legislation has been made, assigned to the constituent SOAs (Source: Communities and Local Government, 2005)
- Difficulty of Access to owner-occupation (Source: modelled estimates produced by Heriot-Watt University, 2005)

Sub Domain: Geographical Barriers

- Road distance to a GP surgery (Source: National Administrative Codes Service, 2005)
- Road distance to a general stores or supermarket (Source: MapInfo Ltd, 2005)
- Road distance to a primary school (Source: DCFS, 2004-05)
- Road distance to a Post Office or sub post office (Source: Post Office Ltd, 2005)

Crime

- Burglary (4 recorded crime offence types, Police Force data for April 2004-March 2005, constrained to Crime and Disorder Reduction Partnership (CDRP) level)
- Theft (5 recorded crime offence types, Police Force data for April 2004-March 2005, constrained to CDRP level)
- Criminal damage (10 recorded crime offence types, Police Force data for April 2004-March 2005, constrained to CDRP level)
- Violence (14 recorded crime offence types including Robbery, Police Force data for April 2004-March 2005, constrained to CDRP level).

The Living Environment Deprivation

Sub-Domain: The 'indoors' living environment

- Social and private housing in poor condition (2003 – 2005 average, Source BRE and Communities and Local Government, modelled EHCS)
- Houses without central heating (Source: 2001 Census)

Sub-Domain: The 'outdoors' living environment

- Air quality (2005, Source: Geography Department at Staffordshire University and NAEI modelled at LSOA level)
- Road traffic accidents involving injury to pedestrians and cyclists (2003-2005 average, Source: DfT, STATS19 (Road Accident Data) smoothed to LSOA level)