



STAFFORDSHIRE

living, working, visiting and investing

Our Shared Future: Community Cohesion in Staffordshire

1. **Background to the work**
2. **Defining cohesion**
3. **Mapping cohesion**
4. **Population change & migration**
5. **A shared vision**
6. **Involvement**
7. **Hate incidents**
8. **Next steps**

Background to the work

- Ted Cante report.....

“depth of polarisation”

“a series of parallel lives”

Defining cohesion

The Commission on Integration and Cohesion¹ define that an integrated and cohesive community is one where:

- There is a clearly defined and widely shared sense of the contribution of different individuals and different communities to a future vision for a neighbourhood, city, region or county
- There is a strong sense of an individual's rights and responsibilities when living in a particular place - people know what everyone expects of them, and what they can expect in turn
- Those from different backgrounds have similar life opportunities, access to services and treatment
- There is a strong sense of trust in institutions locally to act fairly in arbitrating between different interests and for their role and justifications to be subject to public scrutiny
- There is a strong recognition of the contribution of both those who have newly arrived and those who already have deep attachments to a particular place, with a focus on what they have in common
- There are strong and positive relationships between people from different backgrounds in the workplace, in schools and other institutions within neighbourhoods

Defining cohesion

The Commission on Integration and Cohesion¹ define that an integrated and cohesive community is one where:

- There is a clearly defined and widely **shared** sense of the contribution of different individuals and different communities to a **future vision** for a neighbourhood, city, region or county
- There is a strong sense of an **individual's rights and responsibilities** when living in a particular place - people know what everyone expects of them, and what they can expect in turn
- Those from different backgrounds have **similar life opportunities**, access to services and treatment
- There is a strong sense of **trust in institutions** locally to act fairly in arbitrating between different interests and for their role and justifications to be subject to public scrutiny
- There is a strong recognition of the contribution of both those who have **newly arrived** and those who already have deep attachments to a particular place, with a **focus on what they have in common**
- There are **strong and positive relationships between people from different backgrounds** in the workplace, in schools and other institutions within neighbourhoods

Mapping cohesion: The Vulnerable Localities Index (VLI)

- **Crime Statistics - 2006/07 recorded crimes supplied by Staffordshire Police:**
 1. Burglary of a dwelling
 2. Criminal damage to a dwelling

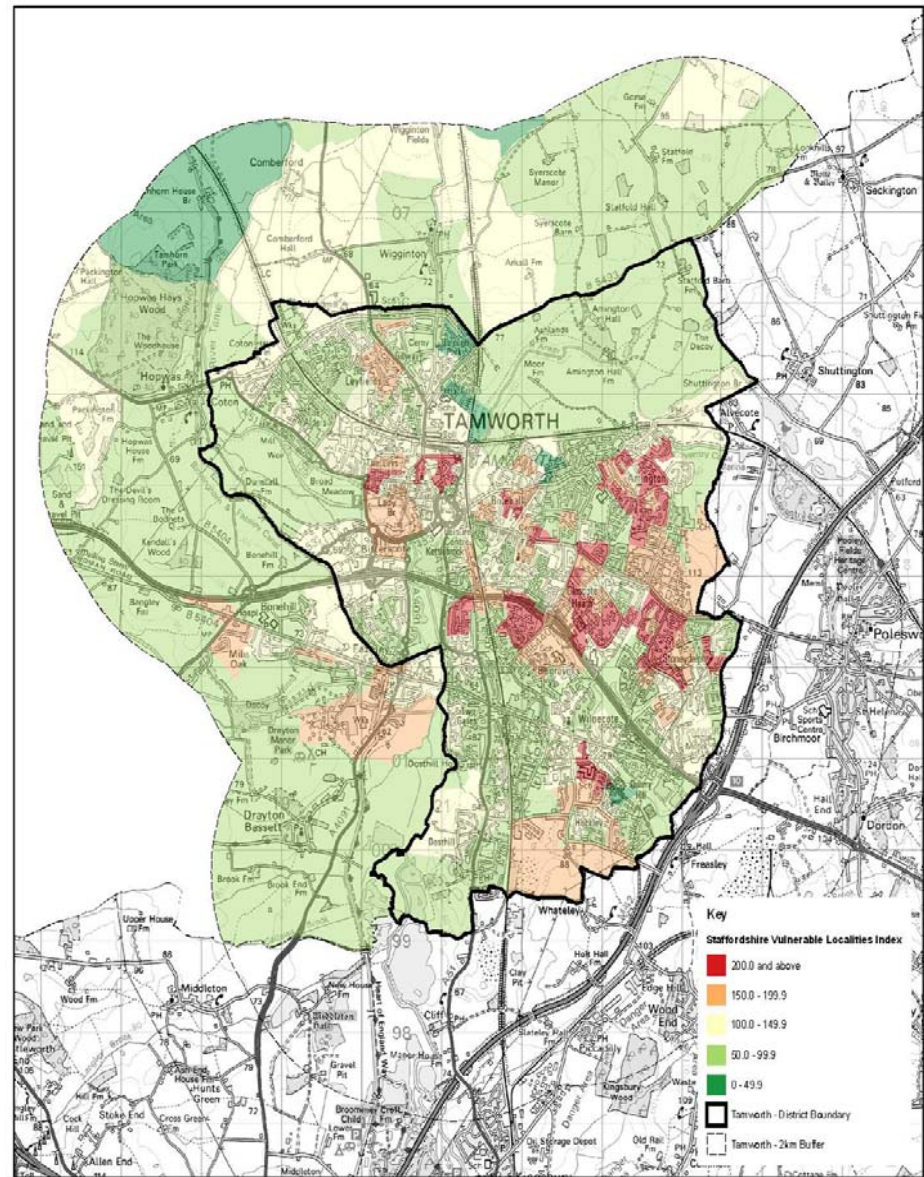
- **Deprivation Statistics - 2004 Index of Multiple Deprivation**
 3. Income deprivation
 4. Employment deprivation

- **Demographic Statistics - 2001 Census**
 5. Percentage of people without a qualification or only a level 1 qualification
 6. Percentage of people aged 15-24 in an area

Mapping cohesion: The Vulnerable Localities Index (VLI) applied to Tamworth Borough

This product includes mapping data licensed from Ordnance Survey with the permission of the Controller of Her Majesty's Stationery Office (C) Crown Copyright and/or database right 2007. All rights reserved. Licence Number 100019422.

Produced by the Research Unit, Development Services Directorate, Staffordshire County Council, 2007.



“87 different primary languages identified amongst Staffordshire primary school pupils”

Source: January 2008 Pupil Level Annual
School Census

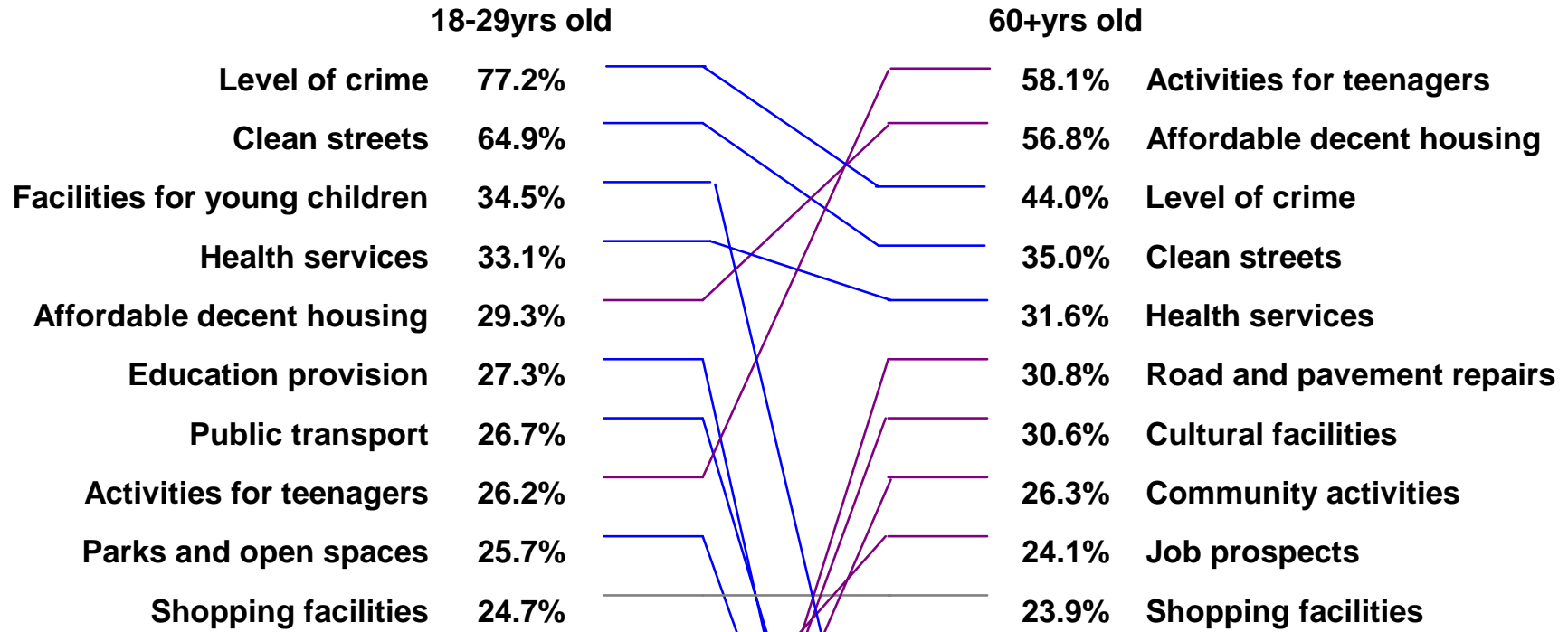
Top ten primary languages of pupils who do not speak English as a first language

- c. 3,500 pupils (c. 3% of total) not speaking English as a first language
- 87 different primary languages recorded
- Primary language not known/recorded for one-thirds of pupils.

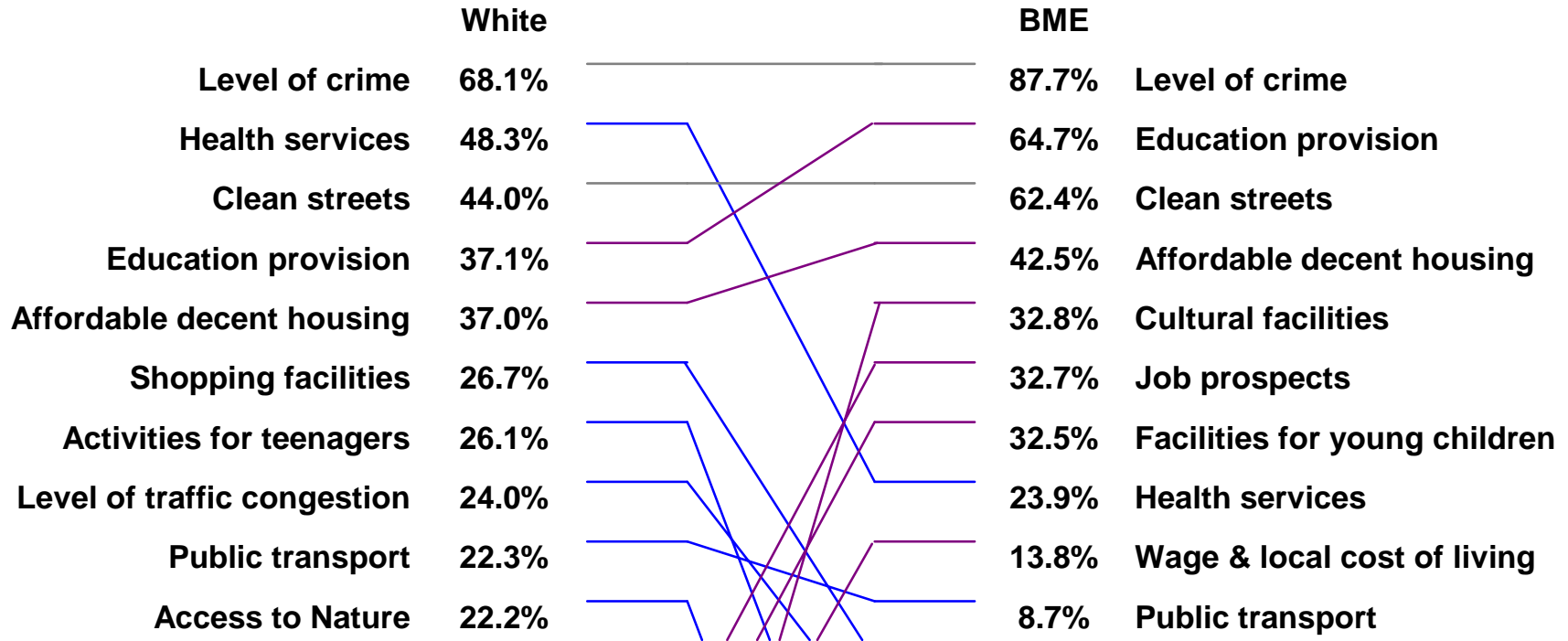
Language	No.	%
Panjabi	828	36.5%
Polish	320	14.1%
Urdu	279	12.3%
Bengali	56	2.5%
French	45	2.0%
Chinese	43	1.9%
Chinese (Cantonese)	43	1.9%
Nepali	40	1.8%
Malayalam	39	1.7%
Tagalog/Filipino	31	1.4%

Source: January 2008 Pupil Level Annual School Census

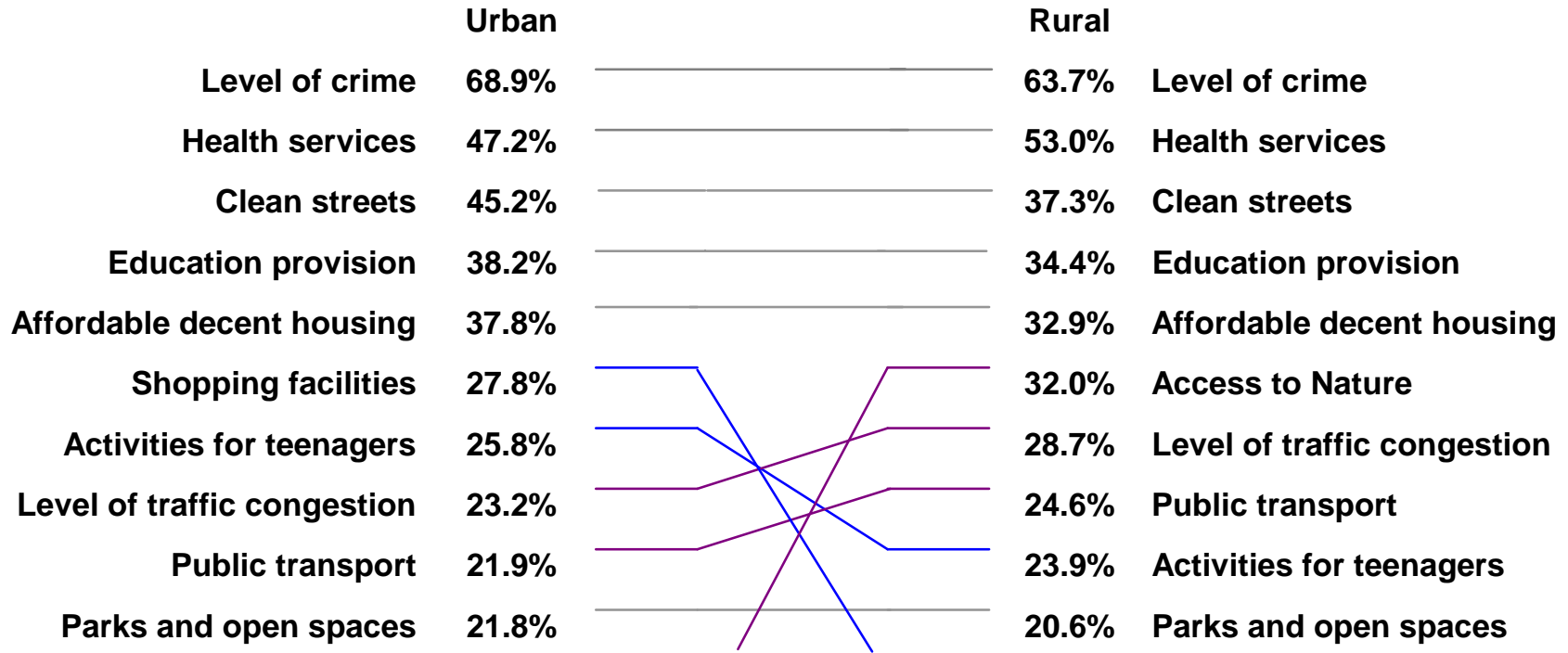
A shared vision for Staffordshire: what is most important



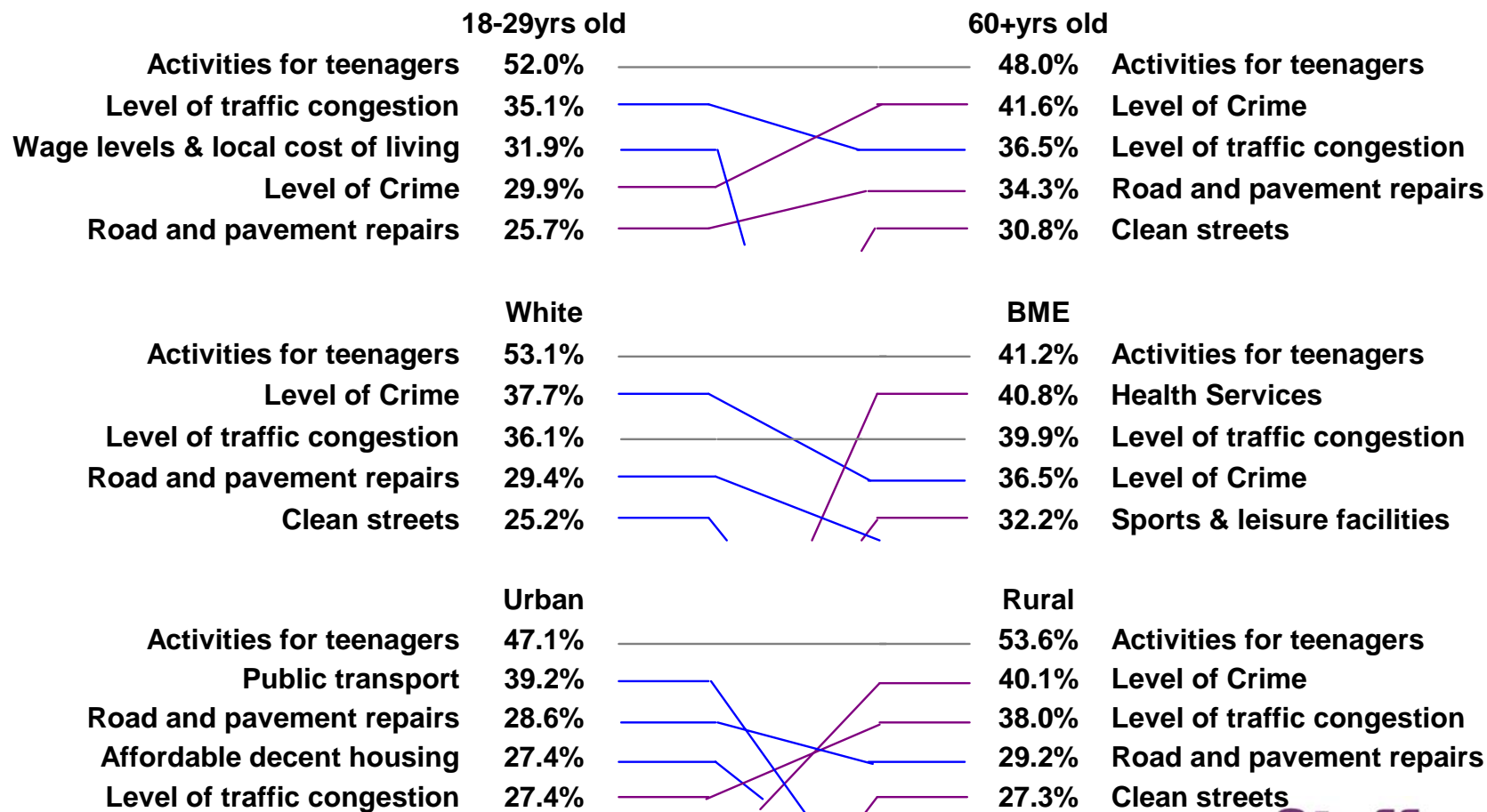
A shared vision for Staffordshire: what is most important



A shared vision for Staffordshire: what is most important



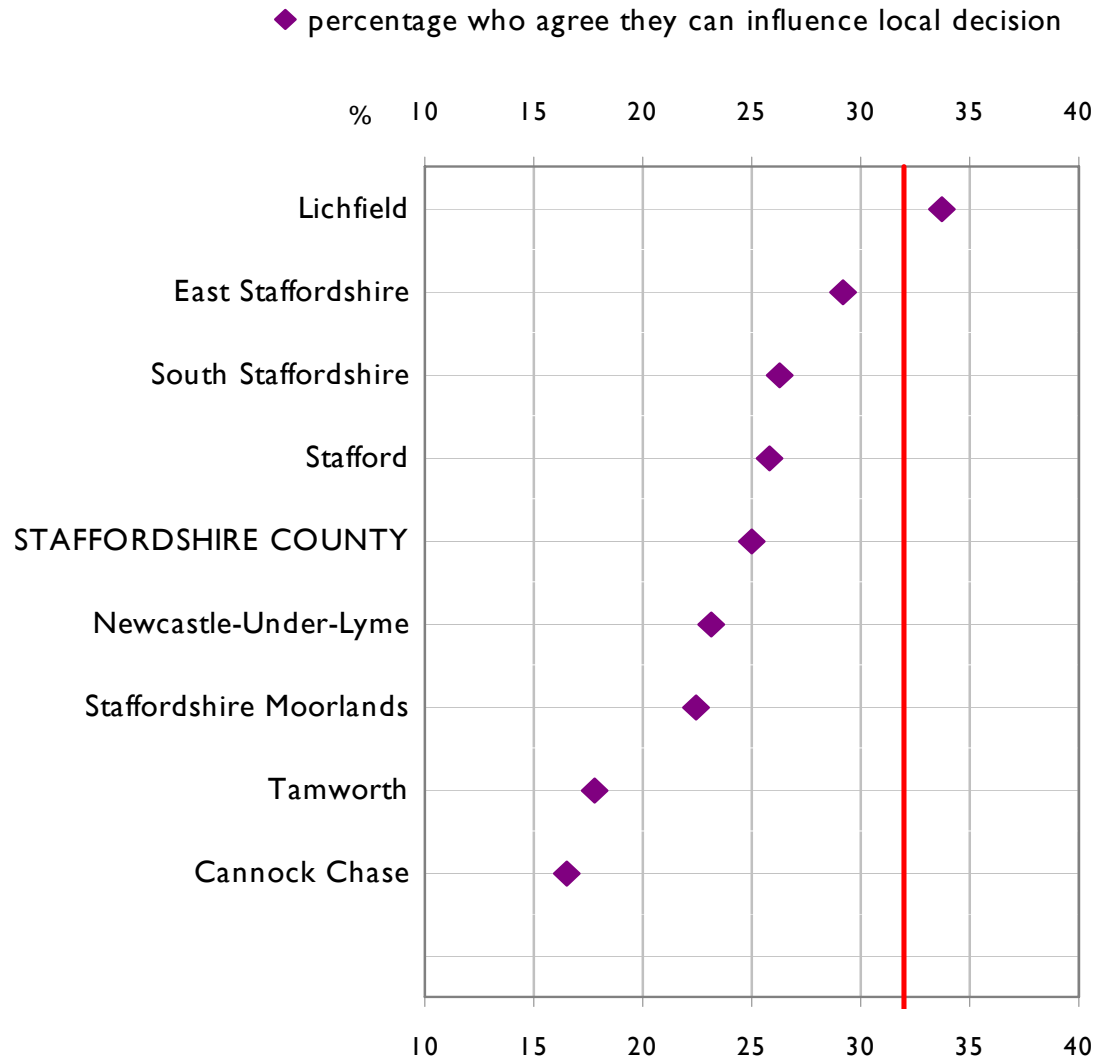
A shared vision for Staffordshire: what most needs improving



Percentage who agree that they can influence local decision making (by district area)

Note: The red line indicates the regional & national figure (32%)

Source: Staffordshire County BVPI Survey, 2006



Hate incidents 2005/06 and 2006/07

	2005-06	2006-07	% change
Racial	463	491	6.0%
Homophobic	46	67	45.7%
Disability	27	27	0.0%
Faith	34	17	-50.0%
Transphobic	11	11	0.0%
Age	0	1	na
Gender	0	0	0.0%
Total	581	614	5.7%

Source: Staffordshire Police

next steps

- **What are we already doing which contributes towards building community cohesion in Staffordshire?**
- **What else could we do? What are the next steps?**

