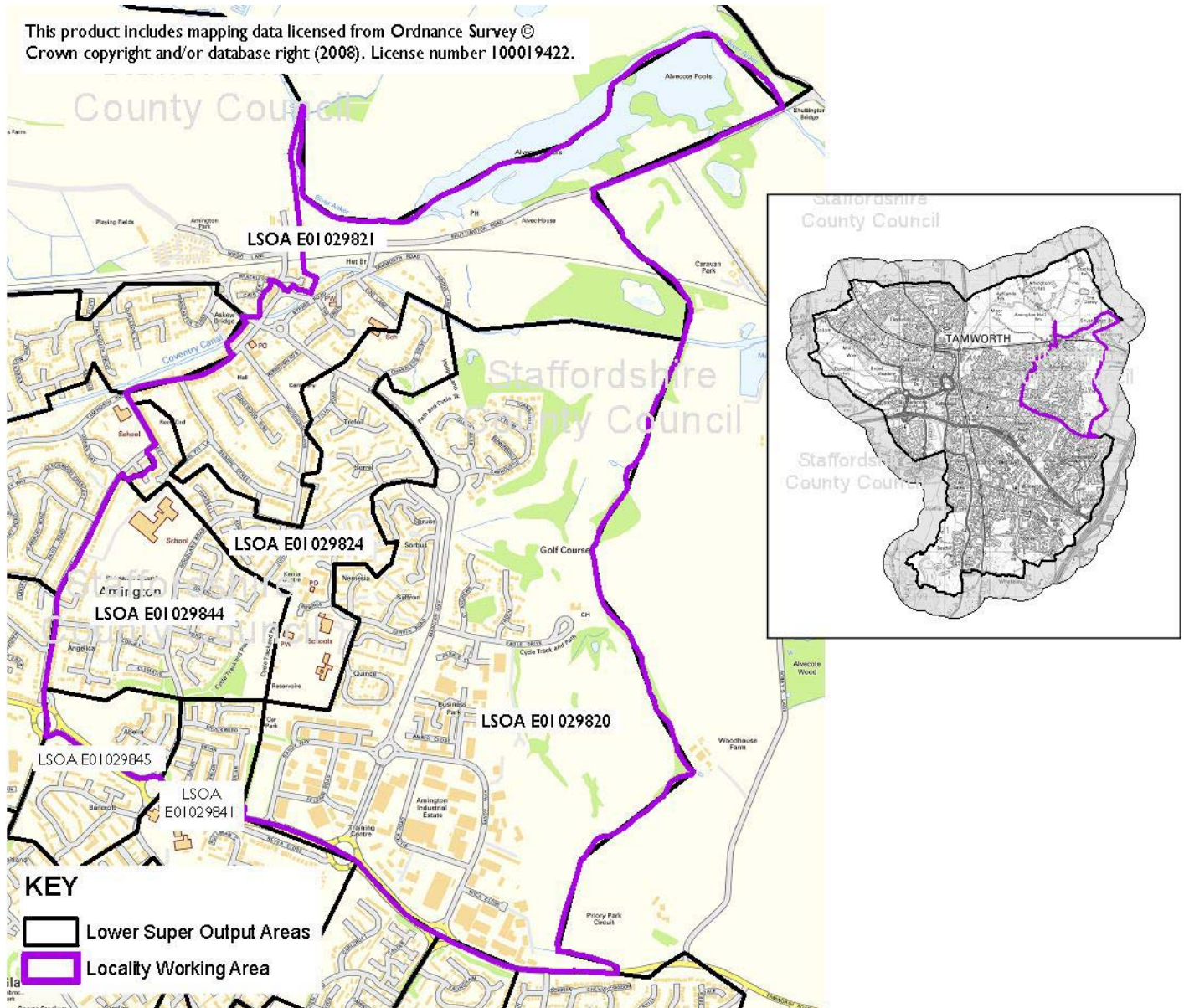


Amington Profile

Tamworth Locality Working

August 2008

This product includes mapping data licensed from Ordnance Survey ©
 Crown copyright and/or database right (2008). License number 100019422.



Summary information for Amington locality area

The Amington locality working area is made up of three complete Lower Super Output Areas (LSOAs); E01029820, E01029824 and E01029844, and parts of a further 3 LSOAs; E01029821, E01029841 and E01029845. These LSOAs fall within the wards of Glascote and Amington. They are covered by the police neighbourhood management area Amington and by Amington Community & Learning Partnership.

Alignment with Local Area Agreement (LAA) Delivery Plans

These LSOAs fall within wards which are being targeted in the Staffordshire LAA delivery plan for National Indicator (NI) 117, which aims to reduce the number of 16 to 18 year olds who are not in education, employment or training (NEET). LSOAs E01029824 and E01029845 are also amongst the 43 areas being targeted as part of the LAA delivery plan for NI 152 which aims to reduce the number of working age people on out of work benefits.

Title	Amington Profile - Tamworth Locality Working
Date created	August 2008
Description	The purpose of this document is to provide a general profile of the area chosen by Tamworth Borough Council as a priority for locality working. This document is not intended to set a baseline of data or provide performance information although it may help to inform both such activities.
Creator	Rosanne Cororan
Contact details	Research Unit Development Services Directorate Staffordshire County Council Riverway Stafford ST16 3TJ t: 01785 27 6568 e: rosanne.cororan@staffordshire.gov.uk
Additional contributions	Section 2 - Children and Young People - Martin Caswell Section 3 - Healthier Communities and Older People - Martin Caswell Section 4 - Safer and Stronger Communities - Susie Bentley
Geographical coverage	Amington - Tamworth
Time period	The latest information up to April 2008 is included, where possible.
Frequency of update	Not known
Format	PDF and Publisher files
Status	Version 1 (9th September 2008)
Copyright statement	This publication is the copyright of Staffordshire County Council. It is expressly forbidden to copy this publication or any part of it, or to copy or to make available to any other person all or part of the data contained in it, without the Council's written permission. It is also forbidden to incorporate the data, or any part of it, in an electronic storage system (other than for the user's own internal purposes) without the Council's permission. Applications for such permission must be made to the County Council in writing.
Disclaimer	Staffordshire County Council, while believing the information in this publication to be correct, does not guarantee its accuracy nor does the County Council accept any liability for any direct or indirect loss or damage or other consequences, however arising from the use of such information supplied.

**If you need a copy of this information
in large print, Braille, another language
or on cassette, please ask us.**

I. DEMOGRAPHY

Over the last 6 years the number of young people has decreased, and the older aged population has increased, and this trend is expected to continue. The overall Black Minority Ethnic (BME) population (3.1%) is lower than the district and county proportions.

According to the 2001 Census, the total population of Amington locality working area is 9,069 people (3,466 households). The 2007 Mid Year Estimates suggest this to be around 9,145 people, indicating a small increase.

Figure 1 shows a breakdown of the population of Amington by age, comparing the 2001 Census to the 2007 mid year population estimates. The 0-15 age band has seen the biggest decrease in the last six years; in 2001 23.4% of the population were in this age band compared to 21.2% in 2007. This group does however contain a bigger proportion of the population of Amington than the district (20.3%) and county (18.2%) proportions.

The 30-44 age group has also decreased over the last six years. In 2001 this group contained 21.5% of the population of Amington, compared to 20.5% in 2007, and is below the district (22.2%) and county (20.7%) proportions.

In line with national figures the older aged population (age 60 and over) has seen a considerable increase from 1,137 people (12.5% of the population) in 2001 to 1,424 (15.6% of the population) in 2007. This is however below the district (18.7%) and county (23.9%) proportions.

Figure 1: Age structure of Amington (2001 Census¹ and 2007 mid year estimates)

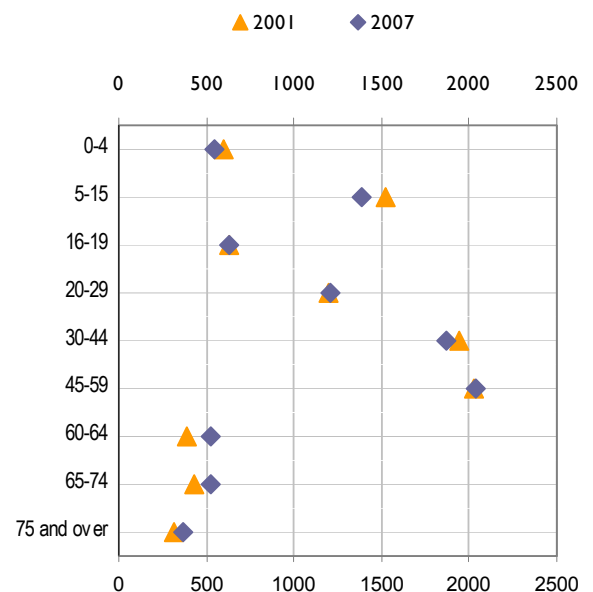


Table 1: Ethnic groups of Amington population¹

Ethnic Group	% of population
White British	96.9%
White Irish	0.8%
Other White	0.8%
Asian or Asian British:Indian	0.6%
Mixed White and Black Caribbean	0.4%
Black or Black British:Black Caribbean	0.3%
Mixed White and Black African	0.1%
Other Mixed	0.1%
Asian or Asian British:Other Asian	0.1%
Black or Black British:Black African	0.1%
Mixed White and Asian	0.0%

The 2001 Census has been used to provide a breakdown of ethnic groups in the Amington locality working area. The majority of people (96.9%) were White British. The overall Black and Minority Ethnic (BME) origin population was 3.1%, which is comparatively lower than the district (3.5%) and county (3.8%) proportion.

The largest BME group is White Irish, followed by Other White, and Asian or Asian British: Indian. A breakdown of the BME groups in the Amington locality area is shown in table 1.

ACORN - Consumer Classification - Within the Amington locality area, the dominant ACORN Category is **Comfortably Off** (44% of the population). Residents living in these areas have few major financial worries and most people own their own home.

Within the category of Comfortably Off, the most populated ACORN Type is **Working Families with Mortgages** (Type 28). These are family suburbs made up of larger families, often with primary school children. Residents in these areas are most likely to respond to advertisements on large poster boards, and popular hobbies include playing the lottery, angling and watching TV.³

NOTE: Where an area contains part of an LSOA, the population of the whole LSOA has been used to aid comparison to the Mid Year Estimates 2007 which are only available down to LSOA geography

¹2001 Census Key Statistics. Census output is Crown Copyright and is reproduced with the permission of Controller of HMSO and the Queen's Printer for Scotland

²ACORN (CACI) 2007

2. CHILDREN AND YOUNG PEOPLE

One LSOA in this area has a rate of 'households with no adults in employment and with dependent children' that is almost 5 times higher than the county comparator.

Due to low numbers teenage pregnancy rates are not available by LSOA, but if ward data is examined Glascote and Amington wards have a teenage pregnancy rate for 2003-05 of 70.5 and 35.1 per 1,000 females aged 15-17 respectively, one rated higher and one lower than the Tamworth district rate of 47.4.

The two high schools with catchment areas covering the LSOAs in this profile are Woodhouse High School and Belgrave High School. In 2007, at Key Stage 4 these schools had a success rate of 30% and 35% respectively, of pupils obtaining 5 or more grades A*-C at GCSE including English and Maths. This is low compared with a Staffordshire rate of 45.7%

Table 2 (opposite) shows the percentage of households in the area who have dependent children with no adult in active employment. This indicator is linked to the economy and deprivation and gives an indication of the number of families in severe financial need. Two LSOAs have a rate over double the district rate and one of the LSOAs has a rate that is more than three times as high as the district and almost five times greater than the county (circled right).

Table 2: Households with no adults in employment with dependent children in Amington¹

	Percentage of households with no employment and dependent children
E01029840 (in Glascote)	17.9%
E01029824 (in Amington)	12.9%
E01029844 (in Glascote)	12.2%
E01029820 (in Amington)	8.3%
Tamworth	5.0%
Staffordshire	3.5%
E01029821 (in Amington)	3.1%

3. HEALTHIER COMMUNITIES AND OLDER PEOPLE

Two LSOAs have a rate of life-limiting long term illness (LLTI) that is greater than the district and county comparator.

Table 3: Percentage of households with at least one person suffering Life-limiting Long Term Illness in Amington¹

	Percentage of households with at least one person suffering life-limiting long term illness
E01029824 (in Amington)	41.5%
E01029840 (in Glascote)	40.2%
Staffordshire	34.6%
E01029820 (in Amington)	34.5%
Tamworth	33.8%
E01029821 (in Amington)	31.5%
E01029844 (in Glascote)	24.1%

With the profile of the general population ageing, the number of people providing care has become even more of a recognised issue. As age of the population increases it is expected that the number of carers will have to increase impacting on the quality of life, free time and income of the carers. Within the Amington locality there is one LSOA that has a rate of carers greater than the district comparator (circled right-table 4).

This indicator is defined as the proportion of adults who report having one or more chronic conditions (long-standing disability or illness) which limit their activities. Incidence of an LLTI is very strongly linked to age, with a sharp rise in this indicator apparent with increased age. The data within this locality (shown in table 3) shows that there are two LSOAs with a rate greater than Tamworth district and county rate (circled left).

Table 4: Percentage of persons providing care in Amington¹

	Percentage of persons providing care
E01029821 (in Amington)	12.1%
Tamworth	12.0%
Staffordshire	11.1%
E01029820 (in Amington)	10.6%
E01029844 (in Glascote)	10.0%
E01029824 (in Amington)	9.9%
E01029840 (in Glascote)	8.9%

¹2001 Census Key Statistics. Census output is Crown Copyright and is reproduced with the permission of Controller of HMSO and the Queen's Printer for Scotland

5. SAFER & STRONGER COMMUNITIES

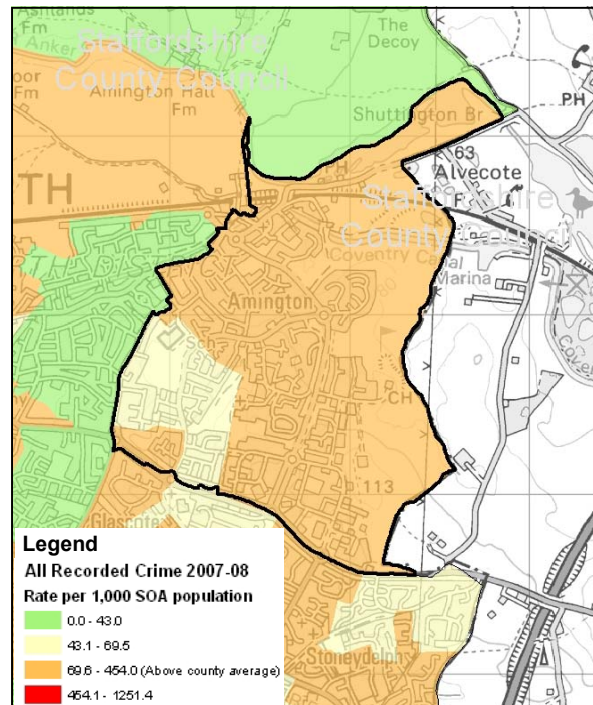
The overall crime rate is slightly lower in the Amington locality area (80.9 per 1,000 population) than for the district as a whole (95.3), but higher than the county level (70.1). The total level of crime recorded within Amington has decreased by 13% over the last 3 years.

Anti-Social Behaviour has increased by 126 incidents (27%) between 2005/06 and 2007/08. All other categories have seen a reduction in crime or incidents over the last 3 years, although Serious Acquisitive Crime has increased by 18 offences (13%) during the last 12 months.

Anti-Social Behaviour, Criminal Damage and Serious Acquisitive Crime each recorded a level of offences above both the district and county level during 2007/08.

Within this locality, the rate of crime recorded is highest within the Amington Heath area, including Kerria Road, Spruce, Sorbus, Sorrel, Trefoil and Madrona. The rate of crime is lower than the county average in the Woodland Road, Foxglove and Greenheart area of Amington.

Figure 2: All recorded crime 2007/08 by LSOA



© Crown copyright. All rights reserved 100019422 2008

Figure 3: Crime & Incidents Recorded³ (comparative figures shown per 1,000 population)

Amington Locality 2007/08	Tamworth Borough 2007/08	Staffs County 2007/08		Amington Locality		
				2005/06	2006/07	2007/08
80.9	95.3	70.1	All Crime	840	721	734
65.3	62.6	46.8	Anti-Social Behaviour	466	444	592
23.8	21.1	15.8	Criminal Damage	239	209	216
16.8	16.1	11.1	Serious Acquisitive Crime	171	134	152
7.8	9.9	7.2	Assault with Injury	89	68	71
4.0	5.0	3.2	Deliberate Ignitions	72	36	36
0.6	0.9	0.7	Serious Violent Crime	11	6	5

Key: Figures circled in red represent a figure above both the district and county level.

³Crime and incident data sourced from Staffordshire Police. Deliberate Ignitions supplied by Staffordshire Fire & Rescue Service.

6. ECONOMIC DEVELOPMENT AND ENTERPRISE

Around 17% of the working age population are claiming benefits, compared to 13.5% in the district and 12% in the county as a whole.

In 2006 there were around 3700 employee jobs in Amington. The largest employment sector in this area was banking, finance and insurance; with almost a third (29.9%) of the workforce employed in this sector. The second largest category is construction (20.8%) of the workforce. The next two biggest categories are manufacturing (19.2%) and public administration, education & health (14.7%). Since 2003 the banking, finance and insurance sector has seen a significant increase of 11%, whilst the distribution, hotels and restaurants sector has witnessed an 8.5% decrease in employment in this area.⁴

In 2008, 16.5% of the working age population (965 people) in this area were claiming benefits, which is higher than both the district (13.5%) and county (11.9%) averages.² The number of people of employment age claiming benefits in this area have however decreased by 5.4% over the last three years.

As shown in table 5, the majority of claimants in Amington are claiming incapacity benefit (460 residents), although this has decreased by 8% over the last three years. Job seekers allowance is the second largest benefit claimed in this area. This has also decreased, by 10.3%, from 145 in 2005 to 130 claimants in 2008. Lone parents benefits have reduced by 3.8%, whilst those claiming carers benefits has remained the same.

Table 5: Benefit claimants in Amington⁵

	Number of people claiming benefits	% of working age population
incapacity benefits	460	7.9%
job seekers	130	2.2%
lone parents	125	2.1%
carers	90	1.5%
disabled	85	1.5%
others on income related benefits	45	0.8%
bereaved	30	0.5%
total claimants	965	16.5%

7. DEPRIVATION

Part of this area experiences a high level of multiple deprivation relating to 'income', 'employment', 'education skills and training', and 'crime and disorder'.

In terms of multiple deprivation, the LSOAs in this area are ranked between 5 and 17 in the district, 27 and 274 in the county and fall between the 17% and 62% most deprived LSOAs nationally (See table 6).

Table 6: Indices of multiple deprivation 2007 LSOA rankings for Amington⁶

LSOA	District Rank (1 to 51)	County Rank (1 to 525)	National Rank (1 to 32,482)	National Rank (%)
E01029824 (in Amington)	5	27	5383	17%
E01029820 (in Amington)	17	123	11717	36%
E01029841 (in Glascote)	20	145	13872	43%
E01029821 (in Amington)	31	221	17910	55%
E01029844 (in Glascote)	37	274	20078	62%

LSOA E01029824 stands out as having the highest level of deprivation in Amington. In terms of income deprivation it is ranked third in the district and falls within the 10%-20% most deprived nationally, with around a third (32%) of the population classed as income deprived. This LSOA follows a similar pattern for employment deprivation; it is ranked fourth in the district and falls within the 10%-20% most deprived LSOAs nationally. Just over 16% of the population in this area are employment deprived. This LSOA also falls into the 10% most deprived LSOAs nationally for crime and disorder and the 20%-30% most deprived nationally for education, skills and training deprivation.

There are additional pockets of deprivation in Belgrave, with E01029820 falling into the 10%-20% most deprived nationally in terms of education, skill and training deprivation, and LSOAs E01029841 and E01029821 falling within the 10%-20% most deprived nationally for crime and disorder.

⁴ Annual Business Enquiry (2006) Office for National Statistics (LSOA level figures have been used)

⁵ Department for work and pensions (2008) Office for National Statistics (LSOA level figures have been used)

⁶ The English Indices of Deprivation 2007 (Communities and Local Government) (LSOA level figures have been used)

Note: District and County deprivations reports link: <http://www.staffordshirepartnership.org.uk/observatory/indices/>